



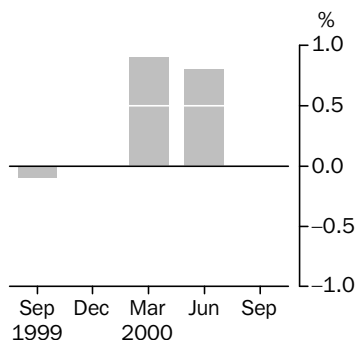
# PRODUCER PRICE INDEXES FOR SELECTED SERVICE INDUSTRIES

AUSTRALIA

EMBARGO: 11.30AM (CANBERRA TIME) THURS 19 OCT 2000

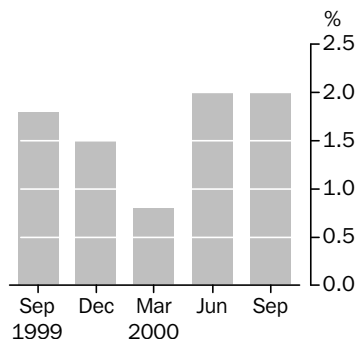
## Transport (freight) and storage division

Quarterly % change



## Property and business services division

Quarterly % change



## SEPTEMBER QTR KEY FIGURES

	% change Jun Qtr 2000 to Sep Qtr 2000	% change Sep Qtr 1999 to Sep Qtr 2000
<b>Transport (freight) &amp; storage division</b>	—	<b>1.7</b>
Road transport (61)	-0.2	1.1
Rail transport (62)	-0.2	-2.3
Water transport (63)	0.2	9.1
Air and space transport (64)	0.7	3.7
Service to transport (66)	0.2	—
Storage (67)	0.1	1.5
<b>Property &amp; business services division</b>	<b>2.0</b>	<b>6.6</b>
Property services (77)	2.6	9.5
Business services (78)	1.4	2.9

— nil or rounded to zero (including null cells)

## SEPTEMBER QTR KEY POINTS

### TRANSPORT (FREIGHT) & STORAGE DIVISION INDEX

- There was no change in the index in the September quarter 2000 compared with an increase of 0.8% in the June quarter 2000.
- There was a 1.7% increase between the September quarters 1999 and 2000.
- Price increases in coastal water transport (1.2%) and scheduled domestic air transport (1.1%) have been offset by decreases in road transport (-0.2%), rail transport (-0.2%) and international sea transport (-0.7%) in the September quarter 2000.

### PROPERTY & BUSINESS SERVICES DIVISION INDEX

- The index rose 2.0% in the September quarter 2000 following a similar rise in the June quarter 2000.
- There was a 6.6% increase between September quarters 1999 and 2000.
- Prices of real estate agents services continued to rise (3.4%).
- Price decreases in motor vehicle hiring (-4.0%) resulted from increased competition.
- The prices of cleaning services increased 2.4% due to rising labour costs.

- For further information about these and related statistics, contact the National Information Service on 1300 135 070 or Carolyn O'Rourke on Canberra 02 6252 6081.

# NOTES

## FORTHCOMING ISSUES

<i>ISSUE (Quarter)</i>	<i>RELEASE DATE</i>
December 2000	19 January 2001
March 2001	19 April 2001

.....

## IMPACT OF THE NEW TAX SYSTEM

The Goods and Services Tax (GST) is excluded from all prices used in compiling the Producer Price Indexes for Selected Service Industries and therefore the introduction of the GST has not had any direct impact on the indexes.

For more details see information paper *Price Indexes and The New Tax System*, (Cat. No. 6425.0), released on 3 May 2000.

## RELATED STATISTICS

For more information about statistics in this publication and the availability of related unpublished statistics, contact Carolyn O'Rourke on fax (02) 6252 7060, or e-mail [carolyn.orourke@abs.gov.au](mailto:carolyn.orourke@abs.gov.au).

## ROUNDING

Any discrepancies between totals and sums of components in this publication are due to rounding. For similar reasons quarterly movements shown by subgroup or group index numbers in Tables 3 and 4 do not necessarily correspond exactly with those shown by the relevant division index points.

.....

## ABBREVIATIONS

ANZSIC Australian and New Zealand Standard Industrial Classification

Dennis Trewin  
Australian Statistician

# 1

## TRANSPORT (FREIGHT) & STORAGE DIVISION INDEX(a)

<i>Period</i>	<i>Index numbers(b)</i>	<i>% change from corresponding quarter of previous year</i>	<i>% change from previous period</i>
<b>1998-99</b>	100.0	na	na
<b>1999-00</b>	100.2	na	0.2
<b>1998</b>			
September	100.1	na	na
December	100.0	na	-0.1
<b>1999</b>			
March	100.3	na	0.3
June	99.6	na	-0.7
September	99.5	-0.6	-0.1
December	99.5	-0.5	—
<b>2000</b>			
March	100.4	0.1	0.9
June	101.2	1.6	0.8
September	101.2	1.7	—

na not available

— nil or rounded to zero (including null cells)

(a) See paragraph 5 in the Explanatory Notes.

(b) Base of each index: 1998-99 = 100.00.

# 2

## PROPERTY & BUSINESS SERVICES DIVISION INDEX(a)

<i>Period</i>	<i>Index numbers(b)</i>	<i>% change from corresponding quarter of previous year</i>	<i>% change from previous period</i>
<b>1998-99</b>	100.0	na	na
<b>1999-00</b>	105.6	na	5.6
<b>1998</b>			
September	98.7	na	na
December	99.9	na	1.2
<b>1999</b>			
March	99.8	na	-0.1
June	101.6	na	1.8
September	103.4	4.8	1.8
December	105.0	5.1	1.5
<b>2000</b>			
March	105.8	6.0	0.8
June	108.0	6.3	2.0
September	110.2	6.6	2.0

na not available

(a) See paragraph 5 in the Explanatory Notes.

(b) Base of each index: 1998-99 = 100.00.

## 3

## TRANSPORT (FREIGHT) &amp; STORAGE DIVISION INDEX(a), Subdivision &amp; Group Contributions

ANZSIC	June Qtr 2000	September Qtr 2000	Change
<b>Transport (freight) &amp; storage division</b>	<b>101.21</b>	<b>101.24</b>	<b>0.03</b>
Road transport (61)	48.91	48.85	-0.06
Rail transport (62)	9.75	9.73	-0.02
Water transport (63)	11.02	11.04	0.02
Air and space transport (64)	7.50	7.56	0.06
Services to transport (66)	7.40	7.42	0.02
Services to water transport (662)	6.02	6.02	—
Other services to transport (664)	1.38	1.39	0.01
Storage (67)	16.62	16.64	0.02

— nil or rounded to zero (including null cells)

(a) For an explanation of this table see paragraph 6 in the Explanatory Notes.

## 4

## PROPERTY &amp; BUSINESS SERVICES DIVISION(a), Subdivision &amp; Group Contributions

ANZSIC	June Qtr 2000	September Qtr 2000	Change
<b>Property &amp; business services division</b>	<b>107.95</b>	<b>110.22</b>	<b>2.27</b>
<b>Property services (77)</b>	<b>62.96</b>	<b>64.58</b>	<b>1.62</b>
Property operators and developers (771)	19.42	19.74	0.32
Real estate agents (772)	38.78	40.09	1.31
Machinery equipment hiring and leasing (774)	4.76	4.76	—
<b>Business services (78)</b>	<b>44.99</b>	<b>45.63</b>	<b>0.64</b>
Scientific research (781)	0.68	0.69	0.01
Technical services (782)	5.68	5.69	0.01
Computer services (783)	8.76	8.80	0.04
Legal and accounting services (784)	8.03	8.17	0.14
Marketing and business management services (785)	8.36	8.64	0.28
Other business services (786)	13.48	13.64	0.16

— nil or rounded to zero (including null cells)

(a) For an explanation of this table see paragraph 6 in the Explanatory Notes.

## TRANSPORT (FREIGHT) &amp; STORAGE SUBDIVISION GROUP &amp; CLASS INDEXES (a)(b)

<i>Period</i>	<i>Road transport (61)</i>	<i>Road freight transport (611)</i>	<i>Road freight transport (6110)</i>	<i>Rail transport (62)</i>	<i>Rail transport (620)</i>	<i>Rail transport (6200)</i>	<i>Water transport (63)</i>	<i>Water transport (630)</i>	<i>International sea transport (6301)</i>	<i>Coastal water transport (6302)</i>
<b>1996-97</b>	na	na	na	109.8	109.8	109.8	na	na	na	na
<b>1997-98</b>	98.8	98.8	98.8	105.1	105.1	105.1	na	na	na	na
<b>1998-99</b>	100.0	100.0	100.0	100.0	100.0	100.0	100.0	100.0	100.0	100.0
<b>1999-00</b>	101.0	101.0	101.0	94.4	94.4	94.4	103.8	103.8	105.1	102.5
<b>1996</b>										
March	na	na	na	112.1	112.1	112.1	na	na	na	na
June	na	na	na	112.3	112.3	112.3	na	na	na	na
September	na	na	na	111.0	111.0	111.0	na	na	na	na
December	na	na	na	108.5	108.5	108.5	na	na	na	na
<b>1997</b>										
March	97.2	97.2	97.2	110.0	110.0	110.0	na	na	na	na
June	98.1	98.1	98.1	109.5	109.5	109.5	na	na	na	na
September	98.1	98.1	98.1	106.9	106.9	106.9	na	na	na	na
December	99.1	99.1	99.1	106.0	106.0	106.0	na	na	na	na
<b>1998</b>										
March	98.7	98.7	98.7	105.3	105.3	105.3	na	na	na	na
June	99.4	99.4	99.4	102.3	102.3	102.3	na	na	na	na
September	99.4	99.4	99.4	103.3	103.3	103.3	101.8	101.8	104.5	99.2
December	99.7	99.7	99.7	99.8	99.8	99.8	100.4	100.4	101.6	99.3
<b>1999</b>										
March	100.5	100.5	100.5	99.5	99.5	99.5	99.4	99.4	97.7	101.2
June	100.4	100.4	100.4	97.4	97.4	97.4	98.3	98.3	96.2	100.3
September	100.5	100.5	100.5	95.9	95.9	95.9	99.7	99.7	99.0	100.4
December	100.7	100.7	100.7	93.6	93.6	93.6	102.1	102.1	101.4	102.8
<b>2000</b>										
March	100.9	100.9	100.9	94.2	94.2	94.2	104.7	104.7	106.5	102.8
June	101.8	101.8	101.8	93.9	93.9	93.9	108.6	108.6	113.3	103.9
September	101.6	101.6	101.6	93.7	93.7	93.7	108.8	108.8	112.5	105.1

na not available

(a) See paragraph 7 in the Explanatory Notes.

(b) Base of each index: 1998-99 = 100.00.

<i>Period</i>	<i>Air and space transport (64)</i>	<i>Air and space transport (640)</i>	<i>Scheduled international air transport (6401)</i>	<i>Scheduled domestic air transport (6402)</i>	<i>Services to transport (66)</i>	<i>Services to water transport (662)</i>	<i>Stevedoring (6621)</i>	<i>Water transport terminals (6622)</i>	<i>Port operators (6623)</i>	<i>Services to water transport n.e.c. (6629)</i>
<b>1996-97</b>	na	na	na	na	na	na	108.0	na	105.4	na
<b>1997-98</b>	na	na	na	na	na	na	101.7	na	101.3	na
<b>1998-99</b>	100.0	100.0	100.0	100.0	100.0	100.0	100.0	100.0	100.0	100.0
<b>1999-00</b>	99.1	99.1	100.1	98.2	97.2	96.6	100.0	99.2	95.8	93.6
<b>1996</b>										
March	na	na	na	na	na	na	112.2	na	110.6	na
June	na	na	na	na	na	na	112.2	na	110.6	na
September	na	na	na	na	na	na	112.2	na	105.4	na
December	na	na	na	na	na	na	112.2	na	105.4	na
<b>1997</b>										
March	na	na	na	na	na	na	103.9	na	105.4	na
June	na	na	na	na	na	na	103.9	na	105.4	na
September	na	na	na	na	na	na	101.7	na	101.3	na
December	na	na	na	na	na	na	101.7	na	101.3	na
<b>1998</b>										
March	na	na	na	na	na	na	101.7	na	101.3	102.2
June	na	na	na	na	na	na	101.7	na	101.3	102.2
September	99.2	99.2	97.7	100.8	100.2	100.4	100.0	99.9	100.0	100.9
December	100.2	100.2	99.6	100.8	100.3	100.4	100.0	99.9	100.0	100.9
<b>1999</b>										
March	102.3	102.3	105.3	99.4	99.7	99.5	100.0	99.7	100.0	99.2
June	98.3	98.3	97.5	99.1	99.9	99.8	100.0	100.6	100.0	99.2
September	98.2	98.2	97.2	99.3	97.2	96.6	100.0	99.2	95.8	93.7
December	96.7	96.7	96.0	97.4	97.2	96.6	100.0	99.2	95.8	93.7
<b>2000</b>										
March	100.5	100.5	103.5	97.6	97.2	96.5	100.0	99.2	95.8	93.5
June	101.1	101.1	103.7	98.5	97.0	96.5	100.0	99.2	95.8	93.5
September	101.8	101.8	104.0	99.6	97.2	96.5	100.0	99.2	95.7	93.5

na not available

(a) See paragraph 7 in the Explanatory Notes.

(b) Base of each index: 1998-99 = 100.00.

<i>Period</i>	<i>Other services to transport (664)</i>	<i>Customs agency services (6644)</i>	<i>Storage (67)</i>	<i>Storage (670)</i>	<i>Grain storage (6701)</i>	<i>Storage n.e.c. (6709)</i>
<b>1996-97</b>	na	na	95.9	95.9	99.3	92.5
<b>1997-98</b>	na	na	99.4	99.4	100.3	98.4
<b>1998-99</b>	100.0	100.0	100.0	100.0	100.0	100.0
<b>1999-00</b>	99.9	99.9	100.9	100.9	100.7	101.2
<b>1996</b>						
March	na	na	na	na	97.8	na
June	na	na	na	na	97.8	na
September	na	na	93.3	93.3	97.8	88.8
December	na	na	94.4	94.4	97.8	91.1
<b>1997</b>						
March	na	na	97.6	97.6	100.9	94.3
June	na	na	98.3	98.3	100.9	95.7
September	na	na	99.5	99.5	100.9	98.2
December	na	na	99.3	99.3	100.9	97.7
<b>1998</b>						
March	na	na	99.1	99.1	99.8	98.3
June	na	na	99.5	99.5	99.8	99.3
September	99.5	99.5	99.5	99.5	99.8	99.2
December	99.8	99.8	100.3	100.3	99.8	100.7
<b>1999</b>						
March	100.3	100.3	100.1	100.1	100.2	100.1
June	100.3	100.3	100.1	100.1	100.2	100.0
September	100.2	100.2	100.3	100.3	100.2	100.4
December	99.8	99.8	100.4	100.4	100.2	100.7
<b>2000</b>						
March	100.2	100.2	101.3	101.3	101.2	101.5
June	99.4	99.4	101.7	101.7	101.2	102.3
September	100.3	100.3	101.8	101.8	101.2	102.5

na not available

(a) See paragraph 7 in the Explanatory Notes.

(b) Base of each index: 1998-99 = 100.00.

## PROPERTY &amp; BUSINESS SERVICES SUBDIVISION GROUP &amp; CLASS INDEXES (a)

<i>Period</i>	<i>Property services (77)</i>	<i>Property operators and developers (771)</i>	<i>Commercial property operators and developers (7712)</i>	<i>Real estate agents (772)</i>	<i>Real estate agents (7720)</i>	<i>Machinery equipment hiring and leasing (774)</i>	<i>Motor vehicle hiring (7741)</i>	<i>Plant hiring or leasing (7743)</i>	<i>Business services (78)</i>	<i>Scientific research (781)</i>
<b>1996-97</b>	na	92.4	92.4	na	na	100.8	91.4	102.7	na	na
<b>1997-98</b>	na	96.5	96.5	na	na	97.4	90.2	98.9	na	na
<b>1998-99</b>	100.0	100.0	100.0	100.0	100.0	100.0	100.0	100.0	100.0	100.0
<b>1999-00</b>	106.9	102.8	102.8	109.9	109.9	101.3	105.0	100.5	103.8	102.7
<b>1996</b>										
March	na	89.7	89.7	na	na	na	na	na	na	na
June	na	90.1	90.1	na	na	102.5	92.0	104.7	na	na
September	na	91.0	91.0	na	na	102.7	91.8	105.0	na	na
December	na	92.0	92.0	na	na	101.4	91.3	103.5	na	na
<b>1997</b>										
March	na	92.2	92.2	na	na	99.3	91.1	101.0	na	na
June	na	94.4	94.4	na	na	99.7	91.2	101.4	na	na
September	na	95.2	95.2	na	na	98.2	89.9	99.9	na	na
December	na	96.2	96.2	na	na	96.5	89.3	98.0	na	na
<b>1998</b>										
March	na	96.9	96.9	na	na	95.9	89.9	97.1	na	na
June	na	97.7	97.7	na	na	99.0	91.8	100.5	na	na
September	98.3	98.6	98.6	97.9	97.9	99.4	94.8	100.3	99.4	98.3
December	99.9	100.5	100.5	99.5	99.5	99.8	100.5	99.7	99.8	98.4
<b>1999</b>										
March	100.4	100.3	100.3	100.5	100.5	100.4	102.2	100.1	99.0	101.3
June	101.4	100.6	100.6	102.1	102.1	100.4	102.5	99.9	101.7	102.0
September	103.6	101.3	101.3	105.2	105.2	101.1	103.1	100.7	103.1	102.3
December	105.6	102.2	102.2	108.2	108.2	101.4	104.6	100.7	104.1	102.3
<b>2000</b>										
March	107.8	103.0	103.0	111.3	111.3	101.2	105.8	100.3	103.3	103.0
June	110.5	104.6	104.6	115.0	115.0	101.4	106.3	100.4	104.6	103.0
September	113.4	106.3	106.3	118.9	118.9	101.4	102.0	101.2	106.1	103.5

na not available

(a) Base of each index: 1998-99 = 100.00.



<i>Period</i>	<i>Scientific research (7810)</i>	<i>Technical services (782)</i>	<i>Architectural services (7821)</i>	<i>Surveying services (7822)</i>	<i>Consultant engineering services (7823)</i>	<i>Computer services (783)</i>	<i>Data processing services (7831)</i>	<i>Information storage and retrieval services (7832)</i>	<i>Computer maintenance services (7833)</i>	<i>Computer consultancy services (7834)</i>
<b>1996-97</b>	na	na	na	na	na	na	na	na	na	na
<b>1997-98</b>	na	na	na	na	na	na	98.0	na	na	na
<b>1998-99</b>	100.0	100.0	100.0	100.0	100.0	100.0	100.0	100.0	100.0	100.0
<b>1999-00</b>	102.7	102.2	100.3	102.6	102.9	108.0	105.3	99.1	100.7	109.6
<b>1996</b>										
March	na	na	na	na	na	na	na	na	na	na
June	na	na	na	na	na	na	na	na	na	na
September	na	na	na	na	na	na	na	na	na	na
December	na	na	na	na	na	na	na	na	na	na
<b>1997</b>										
March	na	na	na	na	na	na	na	na	na	na
June	na	na	na	na	na	na	96.6	na	na	na
September	na	na	na	na	na	na	97.4	na	na	na
December	na	na	na	99.1	na	na	97.5	97.8	na	na
<b>1998</b>										
March	na	na	na	98.9	na	na	97.8	97.8	na	na
June	na	na	na	99.2	na	na	99.3	98.2	na	na
September	98.3	100.4	100.3	100.0	100.5	97.1	99.7	98.3	99.2	96.4
December	98.4	100.2	100.2	99.4	100.3	97.8	99.1	100.0	99.8	97.3
<b>1999</b>										
March	101.3	99.2	99.9	99.1	98.9	99.1	99.0	100.4	100.5	98.9
June	102.0	100.3	99.6	101.6	100.3	106.1	102.3	101.3	100.6	107.5
September	102.3	101.6	99.6	102.1	102.3	106.4	103.8	101.0	100.5	107.7
December	102.3	102.0	99.9	102.7	102.7	108.2	104.9	100.4	100.7	109.9
<b>2000</b>										
March	103.0	102.3	99.9	102.7	103.1	108.6	105.2	100.0	100.7	110.4
June	103.0	102.9	101.9	103.0	103.3	108.7	107.1	95.1	100.7	110.5
September	103.5	103.0	101.0	103.1	103.7	109.2	107.1	94.2	101.0	111.1

na not available

(a) Base of each index: 1998-99 = 100.00.

PROPERTY & BUSINESS SERVICES SUBDIVISION GROUP & CLASS INDEXES (a) *continued*

<i>Period</i>	<i>Legal and accounting services (784)</i>	<i>Legal services (7841)</i>	<i>Accounting services (7842)</i>	<i>Marketing and business management services (785)</i>	<i>Advertising services (7851)(b)</i>	<i>Commercial art and display services (7852)</i>	<i>Market research services (7853)</i>	<i>Business management services (7855)</i>	<i>Other business services (786)</i>	<i>Employment placement services (7861)</i>
<b>1996-97</b>	na	na	na	na	na	na	na	na	na	na
<b>1997-98</b>	na	na	na	na	na	na	na	na	na	na
<b>1998-99</b>	100.0	100.0	100.0	100.0	100.0	100.0	100.0	100.0	100.0	100.0
<b>1999-00</b>	103.1	102.5	103.8	104.2	106.5	102.8	102.8	103.6	102.1	103.7
<b>1996</b>										
March	na	na	na	na	na	na	na	na	na	na
June	na	na	na	na	na	na	na	na	na	na
September	na	na	na	na	na	na	na	na	na	na
December	na	na	na	na	na	na	na	na	na	na
<b>1997</b>										
March	na	na	na	na	na	na	na	na	na	na
June	na	na	na	na	na	na	na	na	na	na
September	na	na	na	na	na	na	na	na	na	na
December	na	na	na	na	na	na	na	na	na	na
<b>1998</b>										
March	na	na	na	na	na	98.9	99.5	na	na	na
June	na	na	na	na	na	98.9	99.5	na	na	na
September	99.7	99.9	99.5	100.7	103.7	98.9	99.5	99.6	99.6	100.1
December	99.8	100.0	99.6	102.1	108.1	98.9	99.8	100.1	99.7	99.6
<b>1999</b>										
March	100.2	100.1	100.4	95.6	83.5	100.7	100.2	100.1	100.2	99.9
June	100.3	100.1	100.6	101.7	104.8	101.5	100.4	100.2	100.5	100.4
September	102.0	101.6	102.4	105.0	112.9	102.7	100.6	102.2	101.3	102.1
December	102.3	101.6	103.0	106.4	115.2	102.8	101.8	103.6	102.2	104.9
<b>2000</b>										
March	103.3	102.7	104.0	99.4	87.9	102.9	104.2	104.0	102.8	104.9
June	104.7	103.9	105.7	105.9	109.8	102.9	104.6	104.6	102.0	103.0
September	106.6	106.1	107.2	109.6	117.4	104.8	106.1	107.3	103.2	103.9

na not available

(a) Base of each index: 1998-99 = 100.00.

(b) Covers television advertising placement services only, where charges are associated with television rating periods. Other advertising services will be included in due course.

PROPERTY & BUSINESS SERVICES SUBDIVISION GROUP & CLASS INDEXES (a) *continued*

<i>Period</i>	<i>Contract staff services (7862)</i>	<i>Secretarial services (7863)</i>	<i>Security and investigative services (except police) (7864)</i>	<i>Pest control services (7865)(b)</i>	<i>Cleaning services (7866)(b)</i>	<i>Business services n.e.c. (7869)</i>
<b>1996-97</b>	na	na	na	na	na	na
<b>1997-98</b>	na	na	na	na	na	na
<b>1998-99</b>	100.0	100.0	100.0	100.0	100.0	100.0
<b>1999-00</b>	103.7	101.2	101.1	102.4	104.2	101.6
<b>1996</b>						
March	na	na	na	na	na	na
June	na	na	na	na	na	na
September	na	na	na	na	na	na
December	na	na	na	na	na	na
<b>1997</b>						
March	na	na	na	na	na	na
June	na	na	na	na	na	na
September	na	na	na	na	na	na
December	na	na	na	na	na	na
<b>1998</b>						
March	na	na	na	97.3	na	na
June	na	98.4	na	98.2	98.2	na
September	98.8	99.7	99.9	98.2	99.8	99.5
December	99.3	99.3	99.7	99.4	99.6	99.8
<b>1999</b>						
March	100.5	100.5	100.1	100.5	100.3	100.2
June	101.5	100.5	100.3	101.9	100.3	100.5
September	102.4	100.3	100.7	101.9	103.1	101.0
December	102.6	100.3	100.7	102.8	103.2	102.2
<b>2000</b>						
March	103.5	102.1	101.3	102.5	104.8	102.4
June	106.2	102.1	101.8	102.5	105.5	100.6
September	107.5	102.9	103.8	103.4	108.0	101.6

na not available

(a) Base of each index: 1998-99 = 100.00.

(b) Excludes domestic activities.

## EXPLANATORY NOTES

### INTRODUCTION

**1** In recognition of the increasing contribution of service industries to the Australian economy, the ABS has embarked on a long-term development program to progressively extend the scope of the producer price indexes into the service sectors of the economy. First results from this program were published in March 1999, by way of experimental indexes, in Information Paper: *Producer Price Index Developments* (Cat. no. 6422.0).

**2** This publication presents producer price indexes for the output of the Transport (freight) & Storage Division, and the Property & Business Services Division of the Australian and New Zealand Standard Industrial Classification (ANZSIC). Included are index numbers for each of the divisions and subdivisions and for selected groups and classes. The index numbers are calculated on the reference base 1998–99=100.0.

### VALUATION BASIS

**3** As services indexes are output indexes the valuation basis is basic prices. The basic price is the amount received by the service provider exclusive of taxes (less subsidies) on products, and transport and trade margins (where relevant).

### CLASSIFICATION

**4** The service industry price index development work is being undertaken within the classification framework provided by the ANZSIC.

**5** The Transport (freight) & Storage Division and Property & Business Services Division indexes measure changes in prices of services provided by establishments classified respectively to ANZSIC Division I, Transport (freight) & Storage and ANZSIC Division L, Property & Business Services. Index numbers for these divisions are provided in tables 1 and 2.

**6** Tables 3 and 4 provide an analysis of the contribution of ANZSIC Subdivisions and Groups respectively to the Transport (freight) & Storage Division and the Property & Business Services Division indexes. For example, the Road Transport Subdivision contributed 48.85 index points to the Transport and Storage Division Index number of 101.24 for September quarter 2000. The three digit ANZSIC codes in these tables contribute to the totals of the two digit ANZSIC codes. For example Scientific research (781) index points of 0.69 contribute to the total Business services (78) index points of 45.63. The final column shows contributions to the change in the division index points, by each subdivision and group.

**7** Table 5 contains index numbers for the subdivisions and selected groups and classes of the ANZSIC Transport (freight) & Storage Division I. Transport indexes presented cover freight activities only. That is, passenger transport is excluded.

**8** Table 6 contains index numbers for the subdivisions and selected groups and classes of the ANZSIC Property & Business Services Division L.

### WEIGHTS

**9** The indexes are fixed weights indexes. The ANZSIC class indexes are aggregated to the relevant group, subdivision and division using weights derived from 1994–95 Input-Output production values, in combination with data from other ABS surveys and industry sources. The weights were revalued to reflect price levels in the reference base year, 1998–99.

### PRICE MEASUREMENT

**10** Prices are generally obtained from principal providers of the services concerned.

**11** Actual transactions prices are used in the indexes — that is, the prices that service providers actually charge buyers. Price series relate to a set of services with fixed specifications. The aim is to incorporate in the indexes price changes for representative services of constant quality.

## EXPLANATORY NOTES *continued*

**12** The development of these new price collections has involved a wide range of diverse industries with different measurement problems. Accordingly, extensive consultation with industry associations and individual businesses has been undertaken to determine the most viable approach, on a case-by-case basis.

**13** Particular characteristics found within the services sector of the economy have complicated the task of price measurement.

**14** The tendency within many industries to provide unique, one-off services tailored to the needs of the individual customers has posed difficulties in establishing continuity of pricing to constant quality.

**15** The 'bundling' of a range of different component services within the one transaction or contract has required investigation of the feasibility of 'unbundling', that is, obtaining separate prices for each of the components of the total service. Where this has not proven to be feasible, the whole service bundle has been priced in total.

**16** Respondent businesses are asked to report details of any discounts they offer so that actual transactions prices can be calculated. However, as discounts are sometimes negotiated between individual buyers and sellers in relation to particular transactions, the identification of representative discounts has not always been straightforward.

**17** The deregulation of some service industries leads to structural changes and more complex pricing practices. To deal with this, we are continually updating our samples to incorporate new businesses and reviewing pricing methodologies over time.

### OTHER SERVICES PRICE INDEXES

**18** Indexes have been established for most of the industry classes within the Transport (freight) & Storage Division and Property & Business Services Division.

**19** As the development work has taken place in stages, some of the indexes presented in this publication commence at earlier periods than the reference base. On the other hand, collections for some ANZSIC classes commenced during or after the reference base. Such indexes are not presented in this publication as they are still considered to be experimental. Please contact Carolyn O'Rourke on 02 6252 6081 with any inquiries.

### FUTURE DEVELOPMENTS

**20** It is planned to publish indexes for the remaining ANZSIC classes within the Transport (freight) & Storage Division and Property & Business Services Division after they develop from experimental to production status. Work will also commence on developing indexes for other divisions of the ANZSIC.

**21** Any changes to the contents of this publication will be highlighted in the *Changes in this issue* section on page 2.

### INDEX NUMBERS

**22** Index numbers for financial years are simple averages of the relevant quarterly index numbers.

### REVISIONS

**23** In cases where more complete information is obtained after index numbers for a period have been published, or it is discovered that incorrect prices have been used in compiling the indexes, revision to index numbers may occur in subsequent issues of this publication.

### ANALYSIS OF INDEX MOVEMENTS

**24** Care should be exercised when interpreting quarter-to-quarter movement in the indexes as short-term movements do not necessarily indicate changes in trend.

## EXPLANATORY NOTES *continued*

### ANALYSIS OF INDEX MOVEMENTS *continued*

**25** Movements in indexes from one period to another can be expressed either as changes in 'index points' or as percentage changes. The following example illustrates the method of calculating index points changes and percentage changes between any two periods.

**26** Property & Business Services Division index numbers -

September Quarter 2000	110.2	(see Table 2)
less June Quarter 2000	108.0	(see Table 2)
Change in index points	2.2	
Percentage change	= 2.2/108.0 x 100	= 2.0

### FURTHER INFORMATION

**27** Further information on recent price index developments in the ABS is presented in the following publications:

*An Analytical Framework for Price Indexes in Australia* (Cat. no. 6421.0)

*Producer Price Index Developments* (Cat. no. 6422.0)

(Comprises detailed discussion of Stage of Production concept and detail of selected Service Industries Indexes.)

*Review of the Import Price Index and Export Price Index, Australia* (Cat. no. 6424.0)

*Price Indexes and The New Tax System* (Cat. no. 6425.0)

### RELATED PUBLICATIONS

**28** Users may also wish to refer to the following Producer Price Index publications, which are available from ABS bookshops:

*Export Price Index, Australia* (Cat. no. 6405.0)

*Import Price Index, Australia* (Cat. no. 6414.0)

*Price Index of Materials Used in Building Other than House Building, Six State Capital Cities* (Cat. no. 6407.0)

*Price Index of Materials Used in House Building, Six State Capital Cities* (Cat. no. 6408.0)

*Price Indexes of Copper Materials, Australia* (Cat. no. 6410.0)

*Price Index of Materials Used in Manufacturing Industries, Australia* (Cat. no. 6411.0)

*Price Indexes of Articles Produced by Manufacturing Industry, Australia* (Cat. no. 6412.0)

*Stage of Production Producer Price Indexes, Australia* (Cat. no. 6426.0)

**29** Other ABS publications which may be of interest include:

*Balance of Payments and International Investment Position, Australia* (Cat. no. 5302.0)

*Consumer Price Index, Australia* (Cat. no. 6401.0)

*Wage Cost Index, Australia* (Cat. no. 6345.0)

*Average Weekly Earnings, States and Australia* (Cat. no. 6302.0)

*Australian National Accounts: Input-Output Tables* (Cat. no. 5209.0)

**30** Current publications produced by the ABS are listed in the *Catalogue of Publications and Products, Australia* (Cat. no. 1101.0). The ABS also issues, on Tuesdays and Fridays, a *Release Advice* (Cat. no. 1105.0) which lists publications to be released in the next few days. The Catalogue and Release Advice are available from any ABS office.

### UNPUBLISHED STATISTICS

**31** As well as the statistics included in this and related publications, the ABS may have other relevant unpublished data available. Inquiries should be made to Carolyn O'Rourke on 02 6252 6081 or to the National Information Service.



## FOR MORE INFORMATION...

- INTERNET* **www.abs.gov.au** the ABS web site is the best place to start for access to summary data from our latest publications, information about the ABS, advice about upcoming releases, our catalogue, and Australia Now—a statistical profile.
- LIBRARY* A range of ABS publications is available from public and tertiary libraries Australia-wide. Contact your nearest library to determine whether it has the ABS statistics you require, or visit our web site for a list of libraries.
- CPI INFOLINE* For current and historical Consumer Price Index data, call 1902 981 074 (call cost 77c per minute).
- DIAL-A-STATISTIC* For the latest figures for National Accounts, Balance of Payments, Labour Force, Average Weekly Earnings, Estimated Resident Population and the Consumer Price Index call 1900 986 400 (call cost 77c per minute).

## INFORMATION SERVICE

Data which have been published and can be provided within five minutes are free of charge. Our information consultants can also help you to access the full range of ABS information—ABS user-pays services can be tailored to your needs, time frame and budget. Publications may be purchased. Specialists are on hand to help you with analytical or methodological advice.

- PHONE* **1300 135 070**
- EMAIL* **client.services@abs.gov.au**
- FAX* 1300 135 211
- POST* Client Services, ABS, GPO Box 796, Sydney 1041

## WHY NOT SUBSCRIBE?

ABS subscription services provide regular, convenient and prompt deliveries of ABS publications and products as they are released. Email delivery of monthly and quarterly publications is available.

- PHONE* 1300 366 323
- EMAIL* subscriptions@abs.gov.au
- FAX* 03 9615 7848
- POST* Subscription Services, ABS, GPO Box 2796Y, Melbourne 3001



2642300009000  
ISSN 1442-8342

RRP \$17.50

© Commonwealth of Australia 2000